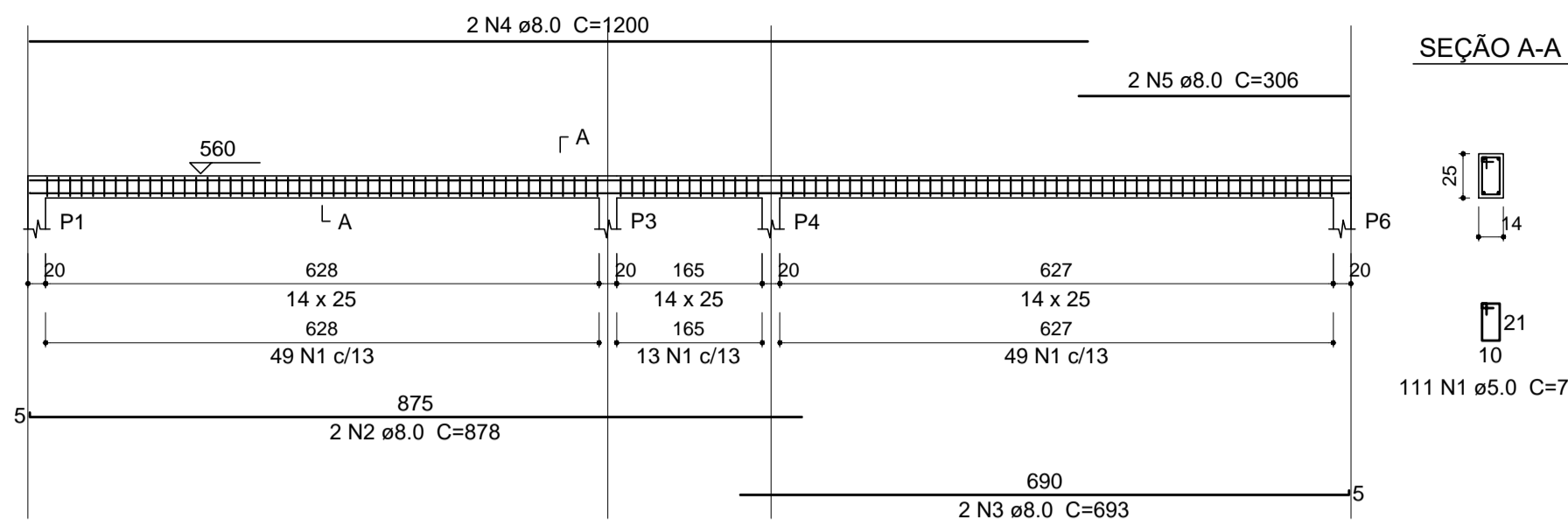
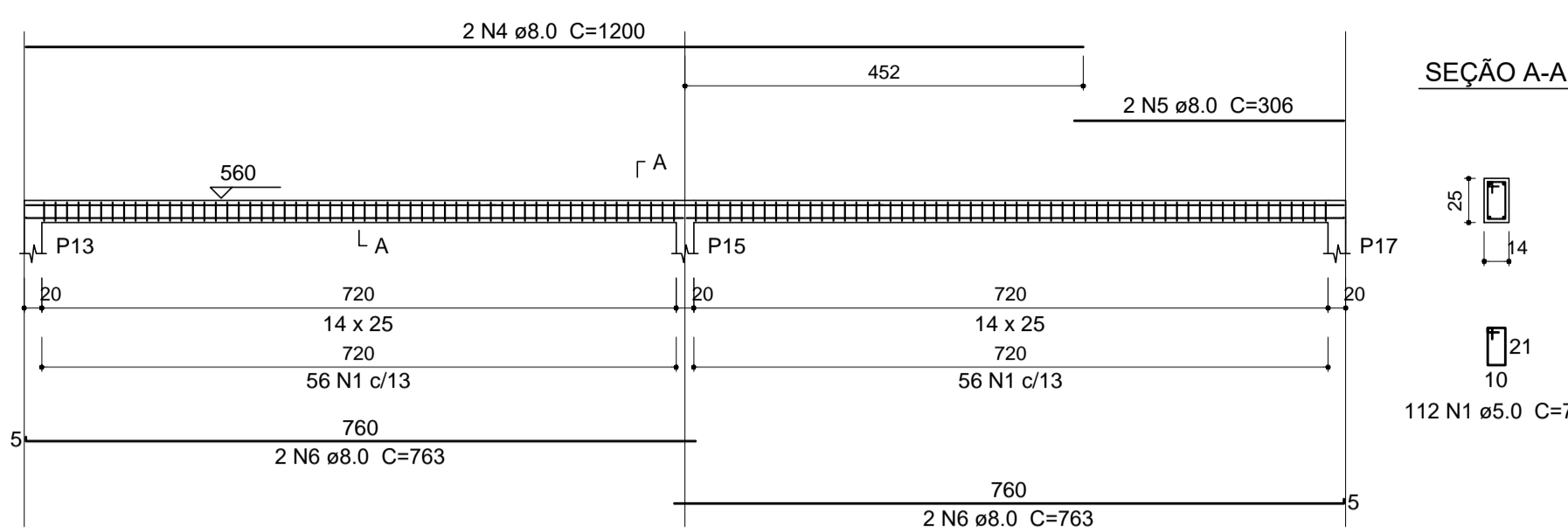


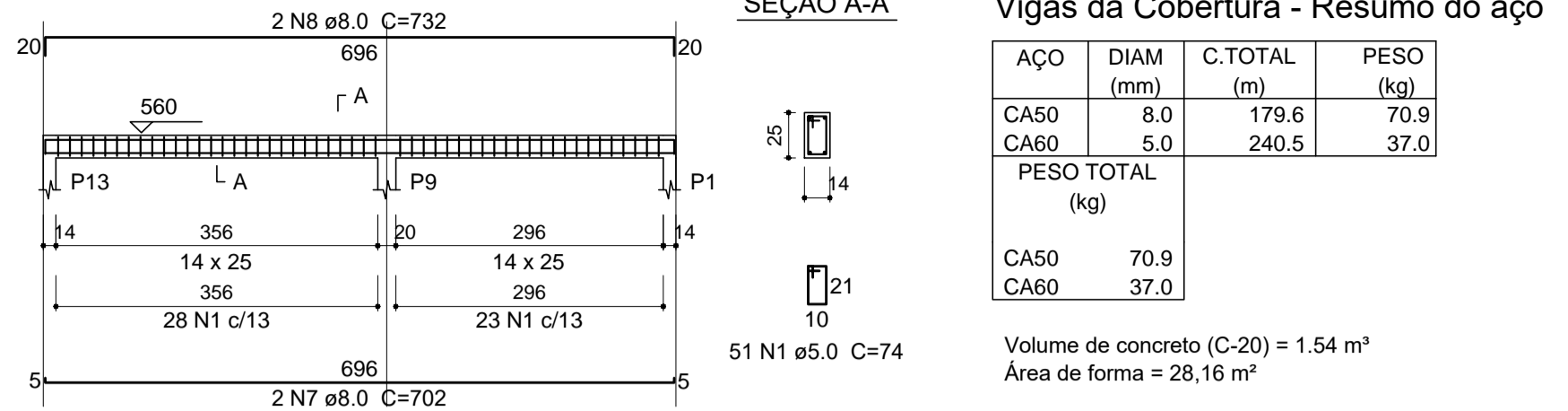
VC1



VC2



VC3

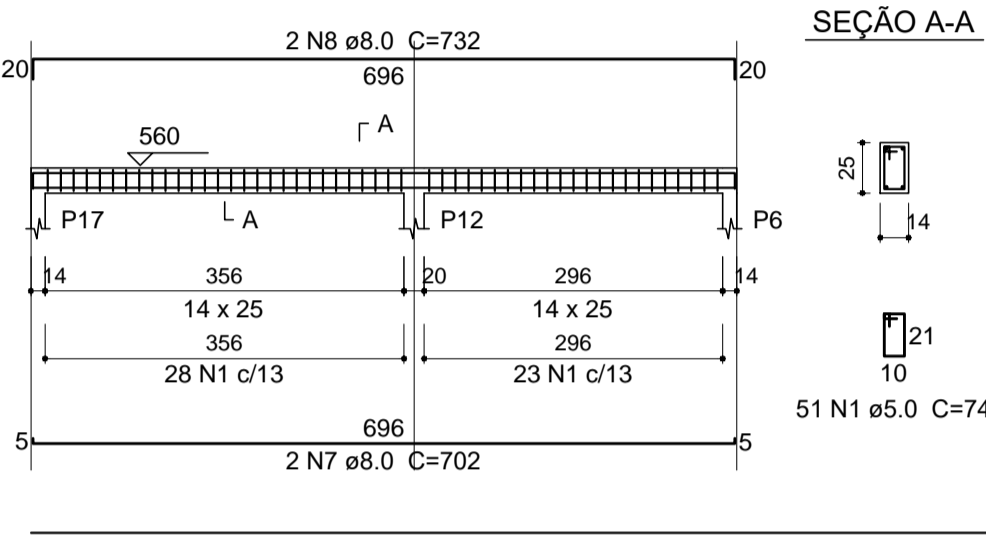


Vigas da Cobertura - Resumo do aço

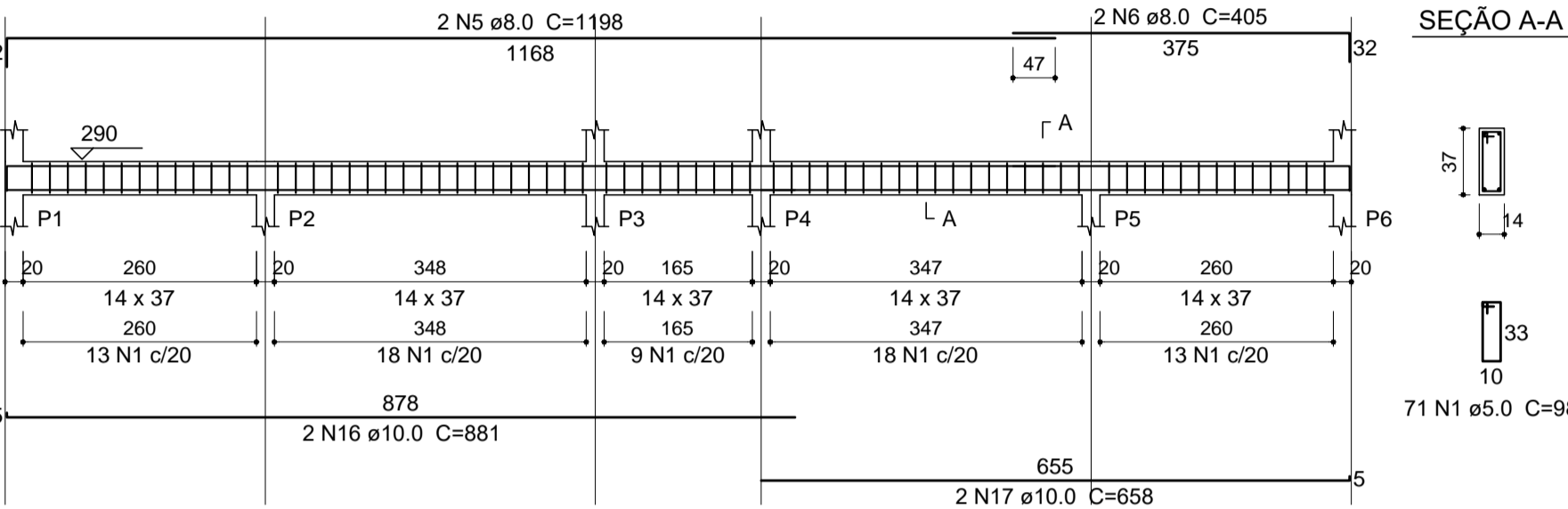
AÇO	DIAM (mm)	C.TOTAL (m)	PESO (kg)
CA50	8.0	179.6	70.9
CA60	5.0	240.5	37.0
PESO TOTAL (kg)			
CA50		70.9	
CA60		37.0	

Volume de concreto (C-20) = 1.54 m³
Área de forma = 28.16 m²

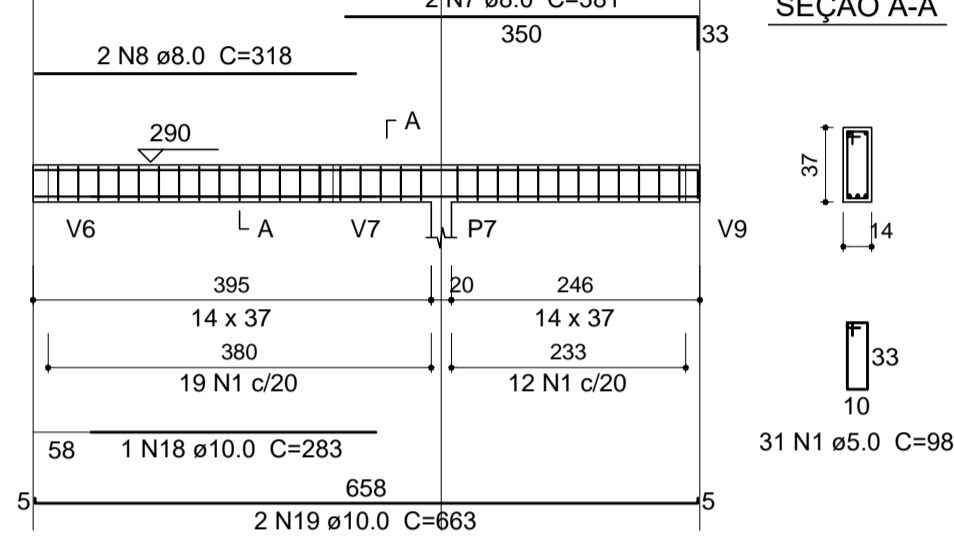
VC4



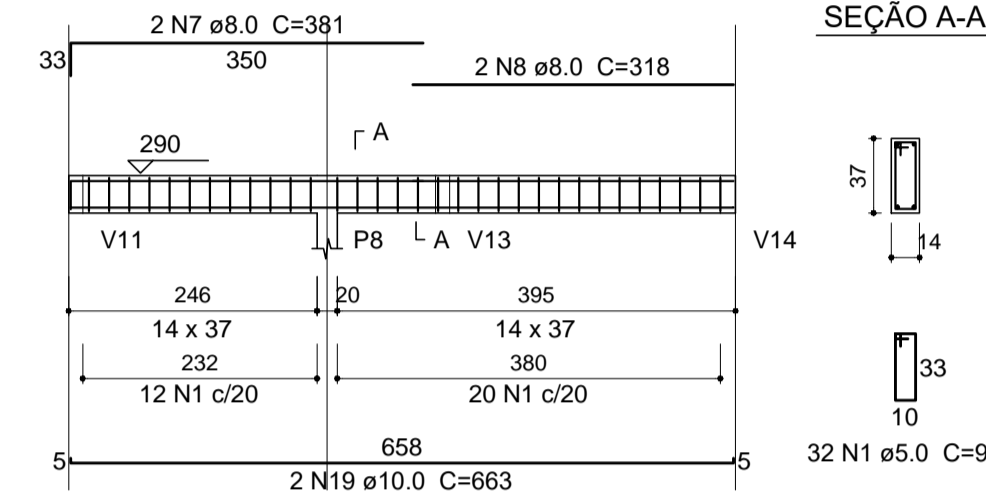
V1



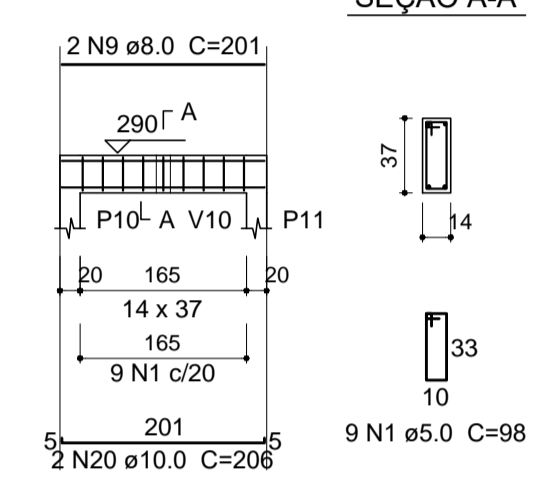
V2



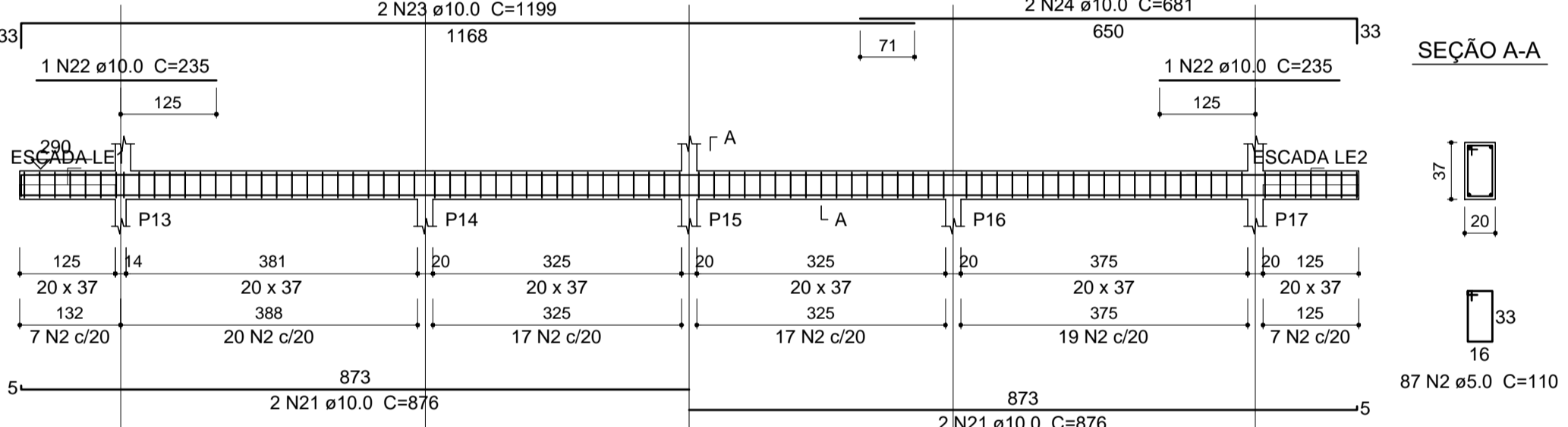
V3



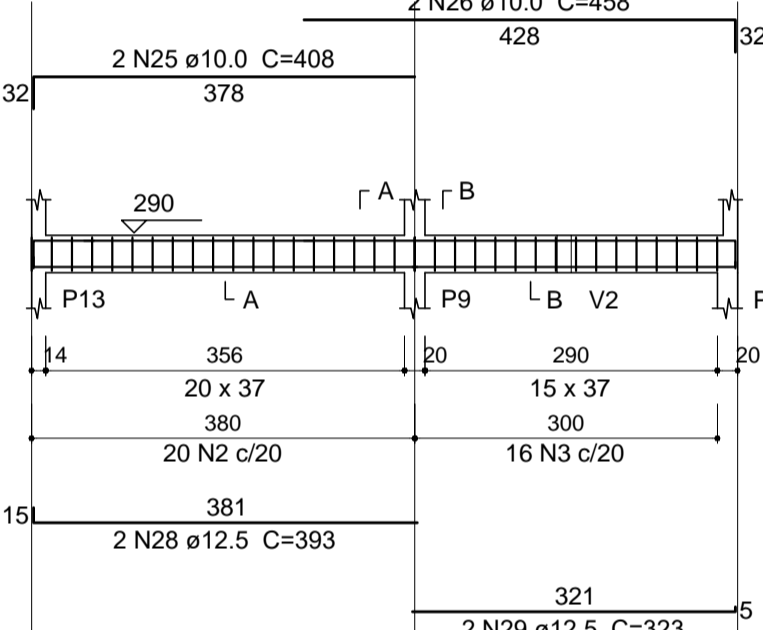
V4



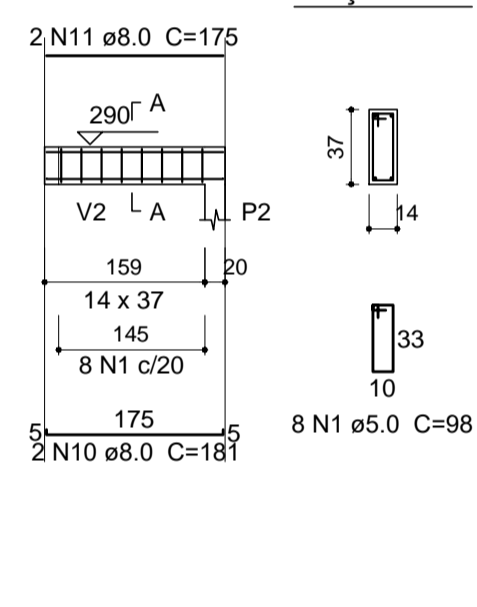
V5



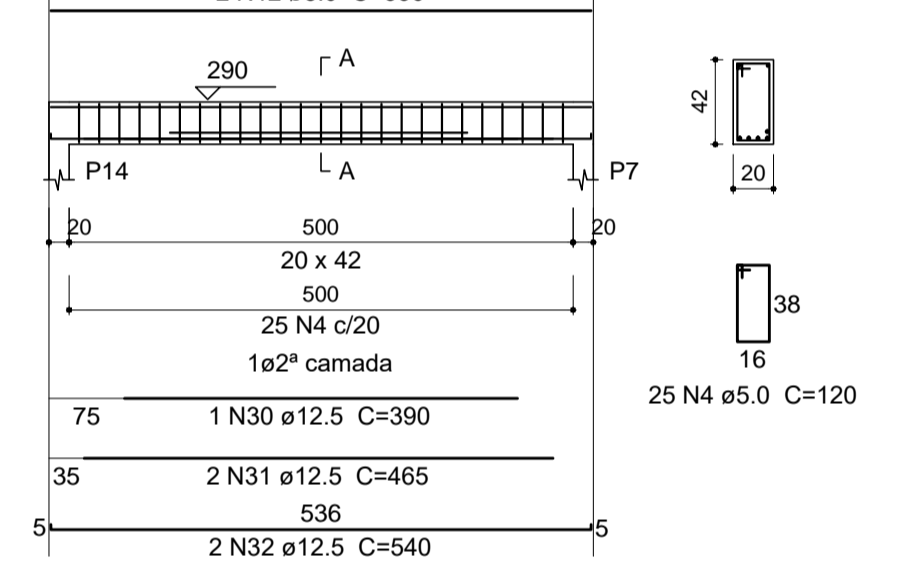
V6



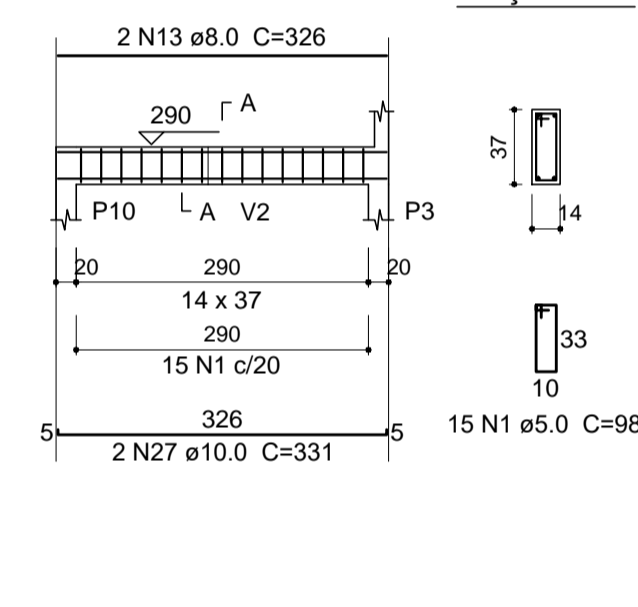
V7



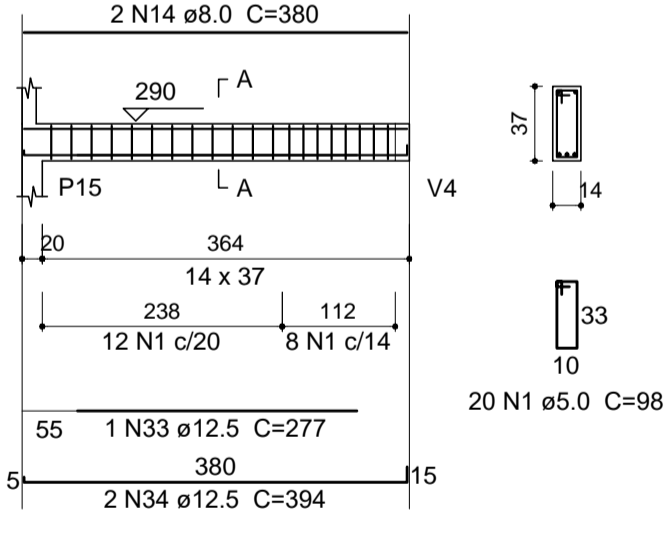
V8



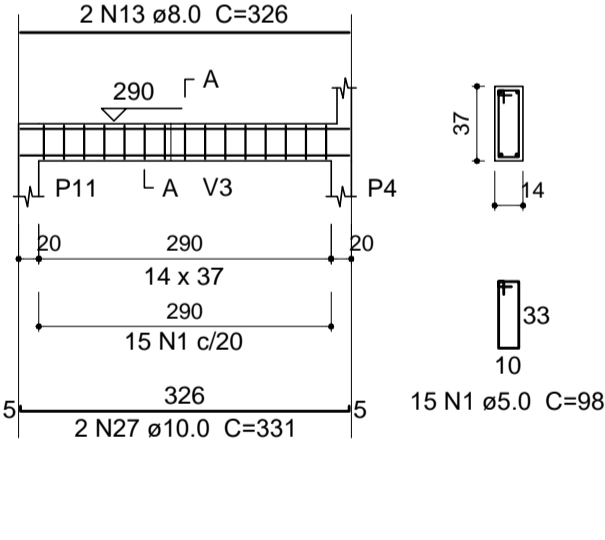
V9



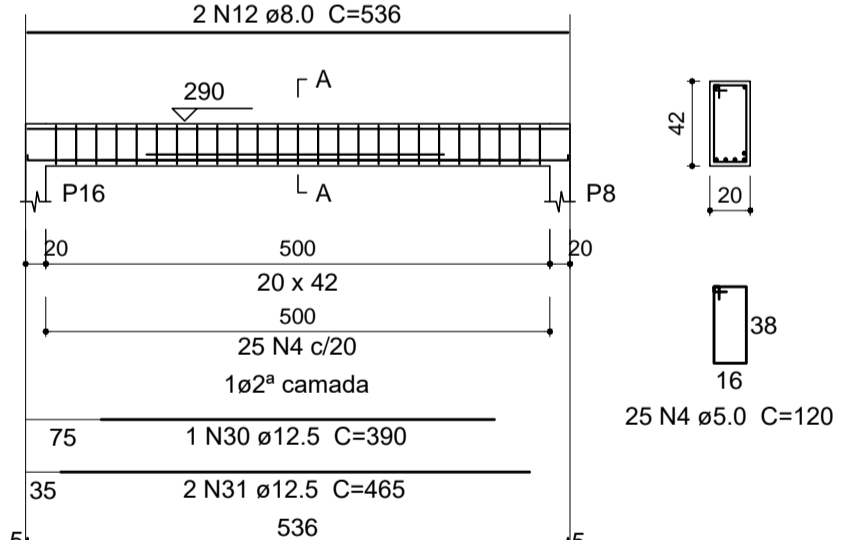
V10



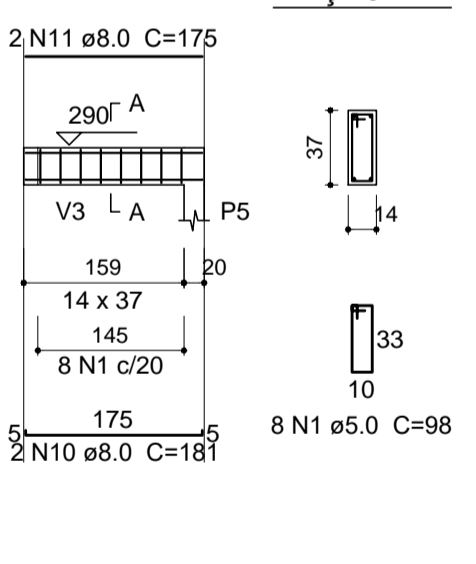
V11



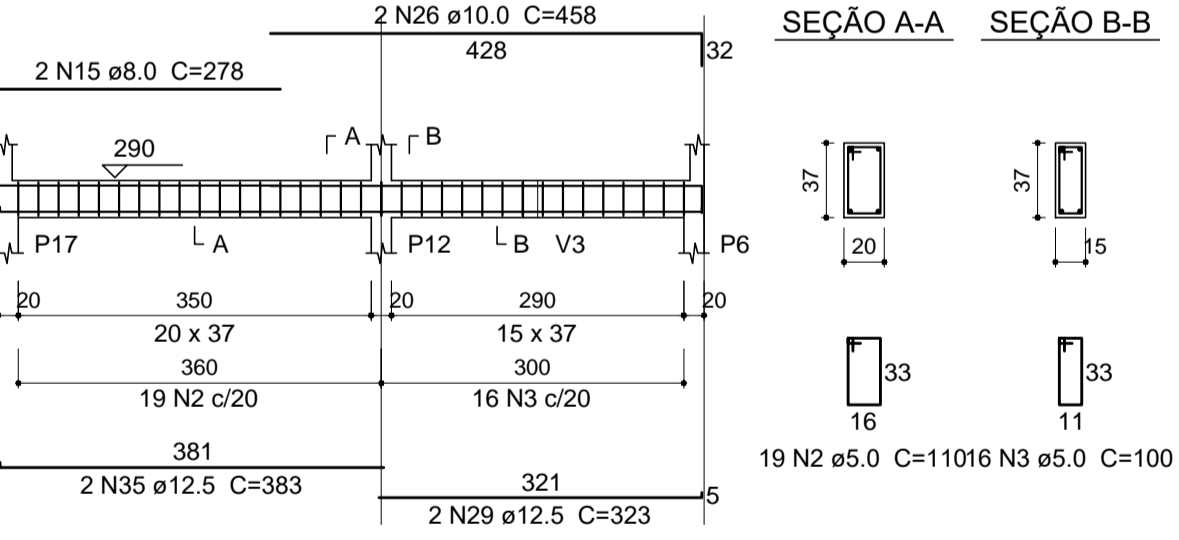
V12



V13



V14



Vigas do Pav. Sup. - Resumo do aço

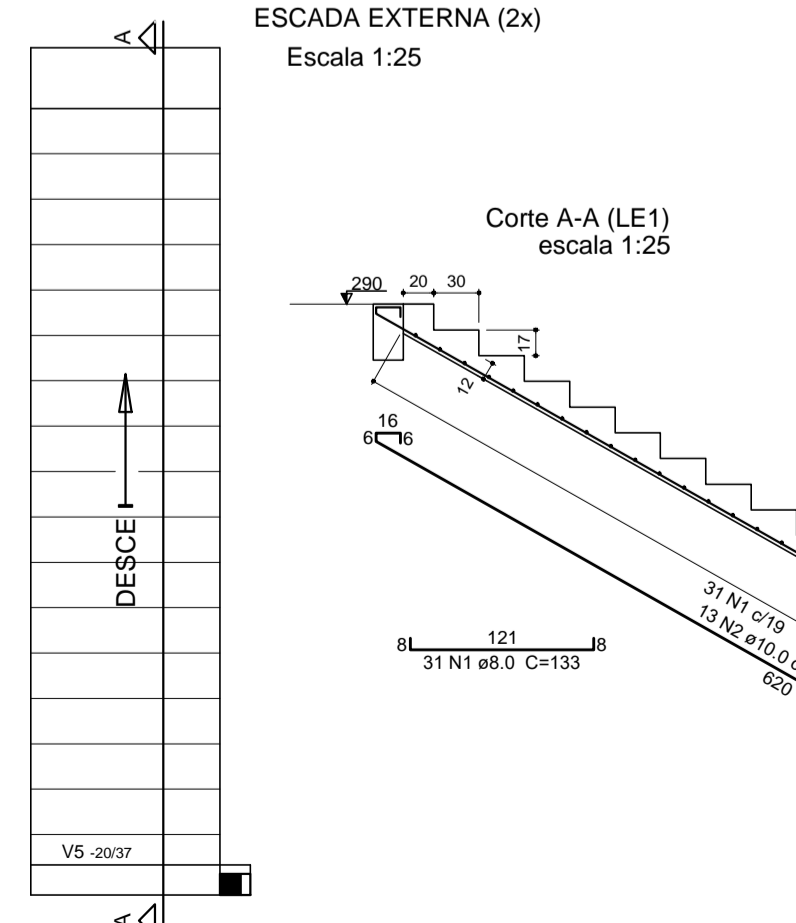
AÇO	DIAM (mm)	C.TOTAL (m)	PESO (kg)
CA50	8.0	126	49.7
CA50	10.0	181.4	111.8
CA50	12.5	87.1	83.9
CA60	5.0	435.5	67.1
PESO TOTAL (kg)			
CA50		245.4	
CA60		67.1	

Volume de concreto (C-25) = 5.41 m³
Área de forma = 79.51 m²

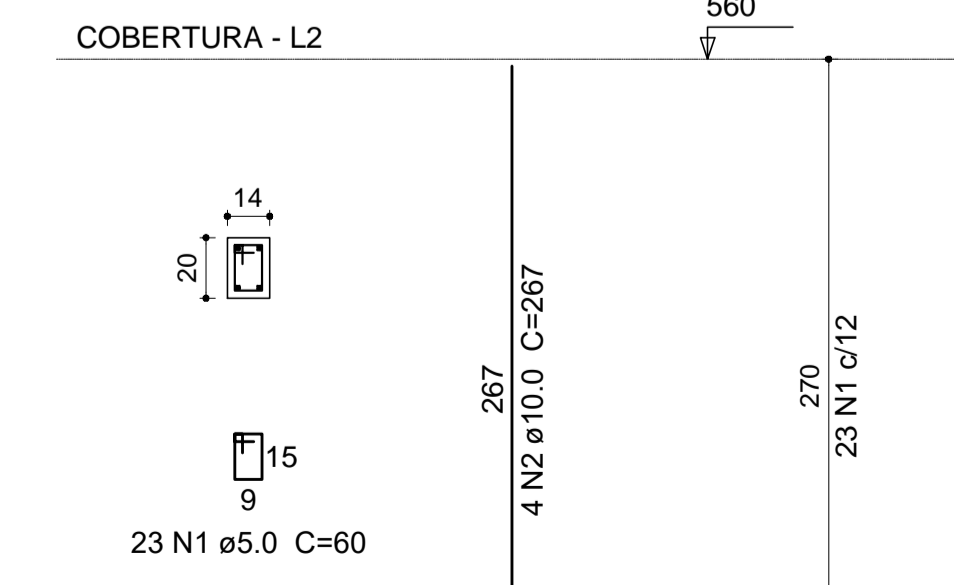
Resumo do aço - Escada

AÇO	DIAM (mm)	C.TOTAL (m)	PESO (kg)
CA50	8.0	82.6	32.6
CA50	10.0	173.0	106.6
PESO TOTAL (kg)			
CA50		139.2	

Volume de concreto (C-25) = 2.84 m³
Área de forma = 28.24 m²



P1=P3=P4=P6=P9=P12=P13=P15=P17



Pilares da Cobertura - Resumo do aço

AÇO	DIAM (mm)	C.TOTAL (m)	PESO (kg)
CA50	10.0	96.2	59.3
CA60	5.0	124.2	19.1
PESO TOTAL (kg)			
CA50		59.3	
CA60		19.1	

Volume de concreto (C-20) = 0.68 m³
Área de forma = 16.52 m²

PREFEITURA MUNICIPAL DE ESPUMOSO
SETOR DE ENGENHARIA E ARQUITETURA

PROPRIETÁRIO: MUNICÍPIO DE ESPUMOSO / RS. DATA: AGOSTO / 2022.
ENDEREÇO DA OBRA: AV. ÂNGELO MACALÓS, 440, ESPUMOSO/RS. ESCALA: 1:75 / 1:25
NOME DA OBRA: VESTIÁRIO AMÉRICA

PROPRIETÁRIO: MUNICÍPIO DE ESPUMOSO/RS. RESP. TÉCNICO: Joelson Carlos da Silveira Presser Eng. Civil - CREIA 090-394. PRANCHA: 04