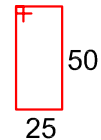
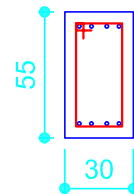
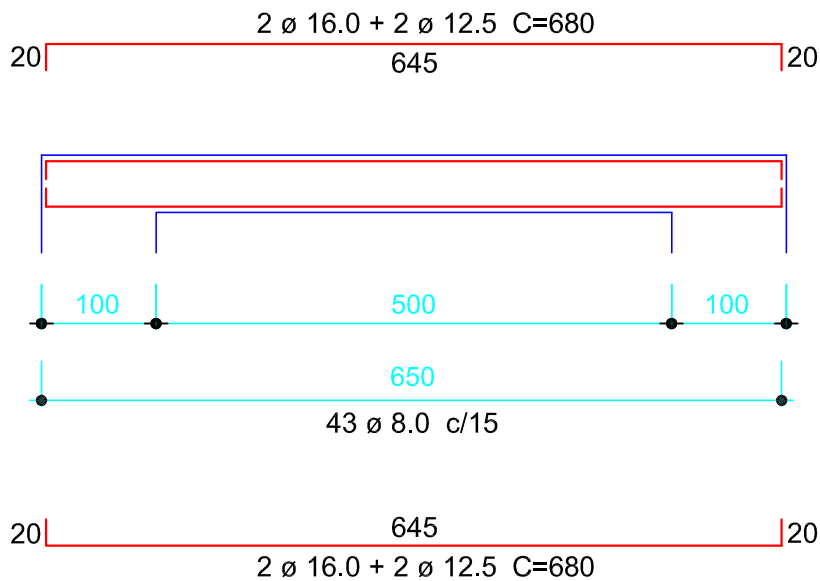


Viga Sobre Cabeceiras (2x)

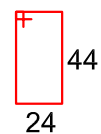
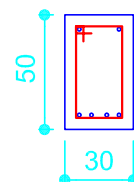
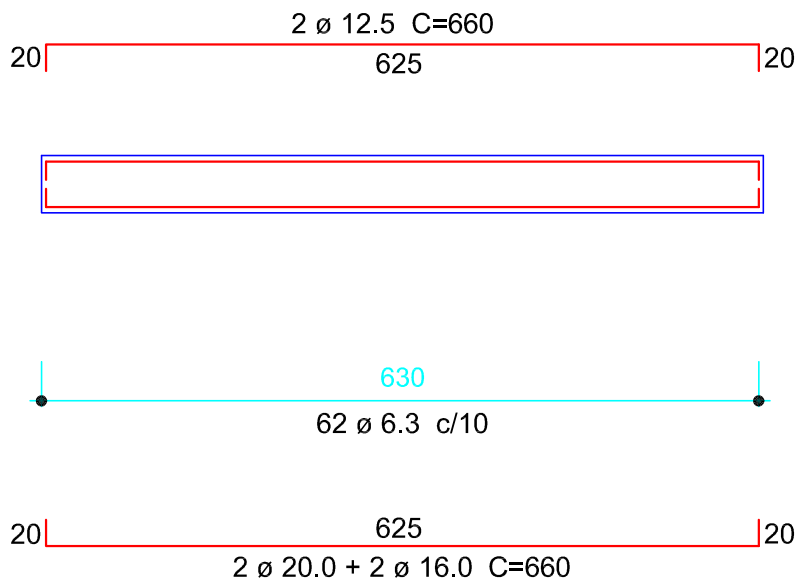
30 x 55 - Comprimento = 6,50m



Estribo ø 8.0 c/15
Estribo 25x50
Corte = 160 cm
Total = 86 Estribos

Viga Travessia do Vão (8x)

30 x 50 - Comprimento = 6,30m



Estribo ø 6.3 c/10
Estribo 24x44
Corte = 150 cm
Total = 496 Estribos

SERVIÇO:

PONTILHÃO PRÓXIMO A RESIDÊNCIA
DE IVO OTTO SCHNEIDER

PREFEITURA MUNICIPAL
DE VICTOR GRAEFF

RESPONSÁVEL TÉCNICO:

LOCAL:

POSSE SERRITO

ÁREA TOTAL:

DATA:

OUTUBRO/2017

OPERADOR:

ESCALA:

S/ESC



FOLHA:

01-02